

AIR HANDLING UNIT SCHEDULE																					
FAN							COOLING							HEATING							
NO.	SERVICE	MIN. C.F.M.	G.F.M. F.A.	EXT. S.P (IN).	FAN H.P.	ELECTRIC SERVICE	MIN. B.T.U.H. OUTPUT	EVAP. TEMP. (°F)	AMB. TEMP. (°F)	ENT (°F)		LAT (°F)		MIN. B.T.U.H. OUTPUT	K.W. ELEC. STRIP		NO. STAGES	ENT. AIR (°F)	LEAV. AIR (°F)	ELECTRIC SERVICE	REMARKS
										DB	WB	DB	WB		MIN.	MAX.					
AHU-1	BREAKROOM / OFFICES	1400	110	0.65"	1/2	208/1/60	42,000	45.0	95.0	73.8	63.4	55.1	54.2	36,900	10.8	--	2	64.6	89.0	208/1/60	TRANE MODEL 5TAM5D05 OR APPROVED EQUAL (1, 2, 3)
AHU-2	WAITING	1400	110	0.65"	1/2	208/1/60	42,000	45.0	95.0	73.7	63.1	55.1	54.1	36,900	10.8	--	2	64.6	89.0	208/1/60	TRANE MODEL 5TAM5C05 OR APPROVED EQUAL (1, 2, 3)
AHU-3	CONFERENCE ROOM	1200	150	0.65"	1/2	208/1/60	36,000	45.0	95.0	75.4	65.4	55.1	54.2	36,900	10.8	--	2	62.6	91.1	208/1/60	TRANE MODEL 5TAM5C04 OR APPROVED EQUAL (1, 2, 3)
AHU-4	107 PARTS	1950	200	0.65"	1.0	208/1/60	60,000	45.0	95.0	74.3	62.8	55.1	54.0	49,135	14.4	--	2	65.7	89.0	208/1/60	TRANE MODEL 5TAM5C07 OR APPROVED EQUAL (1, 2, 3)

- (1) A/C UNIT SHALL BE INTERNALLY WIRED AND FUSED FOR ONE MEANS OF DISCONNECT. PROVIDE TRANE BAYSPEKT200A SINGLE POINT POWER ENTRY KIT.  
(2) PROVIDE FACTORY INSTALLED R-454B REFRIGERANT SENSOR WITH AUTOMATIC SHUTOFF.  
(3) PROVIDE TRANE 7-DAY PROGRAMMABLE THERMOSTAT.

AIR COOLED CONDENSING UNIT SCHEDULE									
UNIT No	SERVICE	BTUH COOLING OUTPUT	EVAP TEMP	AMBIENT TEMP	ELECTRIC SERVICE	UNIT FLA	S.E.E.R.	WEIGHT (LB)	REMARKS
CU-1	AHU-1	42,000	45.0	95.0	460/3/60	(2)	14	212	TRANE MODEL 5TTA4042 OR APPROVED EQUAL (1, 5)
CU-2	AHU-2	42,000	45.0	95.0	460/3/60	(2)	14	212	TRANE MODEL 5TTA4042 OR APPROVED EQUAL (1, 5)
CU-3	AHU-3	36,000	45.0	95.0	460/3/60	(4)	14	156	TRANE MODEL 5TTA4036 OR APPROVED EQUAL (1, 5)
CU-4	AHU-4	60,000	45.0	95.0	460/3/60	(3)	14	211	TRANE MODEL 5TTA4060 OR APPROVED EQUAL (1, 5)

- (1) PROVIDE HAIL GUARDS.  
(2) MCA: 7.9A, MOCP: 15A  
(3) MCA: 10.2A, MOCP: 15A  
(4) MCA: 6.8A, MOCP: 15A  
(5) PROVIDE PROGRAMMABLE THREE PHASE VOLTAGE MONITOR WITH 25 FAULT MEMORY (ICM CONTROLS ICM450A OR APPROVED EQUAL) ON ALL EQUIPMENT REQUIRING THREE PHASE ELECTRICAL.

ELECTRIC UNIT HEATER SCHEDULE										
UNIT No	SERVICE	MIN BTUH OUTPUT	KW STRIP MIN	MOTOR HP	ELECTRIC SERVICE	AMPS	STAGES	FAN CFM	MOUNTING HEIGHT	THROW
EUH-1	123 SPRINKLER	11,200	3.3	--	208/3/60	9.2	1	400	9'	26'

- (1) PROVIDE WALL MOUNTED LOW VOLTAGE THERMOSTAT WITH HEATING STAGES AS SCHEDULED. PROVIDE TRANSFORMER AND INSTALL PER MANUFACTURER'S INSTALLATION INSTRUCTIONS. COORDINATE INSTALLATION WITH ELECTRICAL CONTRACTOR.  
(2) PROVIDE ALL OPTIONS REQUIRED TO HANG AND SECURE UNIT HEATERS FROM STRUCTURE.

FAN SCHEDULE											
No	SERVICE	MIN. CFM	EXT. SP	RPM	SONES	FAN HP	TYPE	DRIVE	ELECTRIC SERVICE	CONTROL	REMARKS
EF-1	JANITOR	50	0.5"	830	2.0	30.0W	CENT	DIRECT	120/1/60	(3)	COOK GC (CEILING) OR APPROVED EQUAL (1, 2, 3)
EF-2	113 W. R.R.	50	0.5"	830	2.0	30.0W	CENT	DIRECT	120/1/60	(3)	COOK GC (CEILING) OR APPROVED EQUAL (1, 2, 3)
EF-3	114 M. R.R.	100	0.5"	1036	2.5	43.2W	CENT	DIRECT	120/1/60	(3)	COOK GC (CEILING) OR APPROVED EQUAL (1, 2, 3)
EF-4	121 W. R.R.	50	0.5"	830	2.0	30.0W	CENT	DIRECT	120/1/60	(3)	COOK GC (CEILING) OR APPROVED EQUAL (1, 2, 3)
EF-5	118 M. R.R.	100	0.5"	1036	2.5	43.2W	CENT	DIRECT	120/1/60	(3)	COOK GC (CEILING) OR APPROVED EQUAL (1, 2, 3)
EF-6	REMOVED FROM PROJECT										
EF-7	212 M. R.R.	100	0.5"	1036	2.5	43.2W	CENT	DIRECT	120/1/60	(3)	COOK GC (CEILING) OR APPROVED EQUAL (1, 2, 3)
EF-8	REMOVED FROM PROJECT										
EF-9	103 W. R.R.	50	0.5"	830	2.0	30.0W	CENT	DIRECT	120/1/60	(3)	COOK GC (CEILING) OR APPROVED EQUAL (1, 2, 3)
EF-10	102 M. R.R.	100	0.5"	1036	2.5	43.2W	CENT	DIRECT	120/1/60	(3)	COOK GC (CEILING) OR APPROVED EQUAL (1, 2, 3)
EF-11	101 SERVICE BAYS	21,000	0.125"	282	12.2	1.5	PROP.	BELT	120/1/60	HOA STARTER (7)	COOK MODEL 54XLW OR APPROVED EQUAL (4, 5, 6)
EF-12	101 SERVICE BAYS	21,000	0.125"	282	12.2	1.5	PROP.	BELT	120/1/60	HOA STARTER (7)	COOK MODEL 54XLW OR APPROVED EQUAL (4, 5, 6)
EF-13	104 OIL/COMPRESSORS	900	0.45"	1022	5.4	1/6	CENT	DIRECT	120/1/60	SWITCH	COOK MODEL SQND OR APPROVED EQUAL (1, 8, 9)

- (1) MOUNT S.S.S.C. ON FAN HOUSING AND BALANCE TO CFM SCHEDULED.  
(2) FAN SHALL HAVE INTEGRAL BACKDRAFT DAMPER, W.B.E. GRILLE, AND MOUNTING BRACKETS.  
(3) FAN SHALL BE CONTROLLED BY CEILING MOUNTED OCCUPANCY SENSOR (LEVITON ODOOS-11W OR APPROVED EQUAL) WITH 5 MINUTE TIMER SETTING INDEPENDENT OF THE LIGHTING CIRCUIT, 360° FIELD-OF-VIEW, INDICATOR LIGHT, AND PASSIVE INFRARED DETECTION. MECHANICAL CONTRACTOR SHALL PROVIDE OCCUPANCY SENSOR, INSTALLED BY ELECTRICAL CONTRACTOR (COORDINATE WITH ELECTRICAL CONTRACTOR). OCCUPANCY SENSOR SHALL BE INSTALLED IN AN UNOBSTRUCTED LOCATION.  
(4) THE MECHANICAL CONTRACTOR SHALL PROVIDE ADDITIONAL SHEAVES FOR EACH BELT DRIVE FAN AS REQUIRED FOR BALANCING TO CFM SCHEDULED. COORDINATE WITH THE TAB CONTRACTOR.  
(5) FAN SHALL HAVE INTEGRAL BACKDRAFT DAMPER, W.B.E. GRILLE, MOUNTING BRACKETS, AUTO BELT TENSIONER, WEATHER HOOD, BIRD SCREEN, HEAVY DUTY GRAVITY SHUTTER, WALL COLLAR, AND WIREGUARD-MOTOR SIDE. COORDINATE EXACT DIMENSIONS AND INSTALLATION REQUIREMENTS WITH MANUFACTURER'S INSTALLATION INSTRUCTIONS. PROVIDE KYNAR FINISH FOR WEATHER HOOD. ALL PARTS, SLEEVES, DAMPERS, FASTENERS, COLLAR, GUARD, ETC. ARE TO BE COATED WITH PHENOLIC EPOXY HERESITE COATING. COORDINATE WEATHER HOOD AND FAN COLOR WITH ARCHITECT PRIOR TO SHOP DRAWINGS PHASE.  
(6) EXHAUST INTAKE SHALL BE THROUGH INTERLOCKED COMBINATION LOUVERS.  
(7) PROVIDE HAND-OFF/AUTO. STARTER WITH SWITCH, PILOT LIGHT, FIREMAN'S OVERRIDE, AND CONTROL INTERFACE WITH CO/NO2 MONITOR TO OVERRIDE STARTER.  
(8) SUSPEND AT MAX HEIGHT (APPROX. 10'-6" A.F.F. TO BOTTOM OF FAN).  
(9) PROVIDE BACKDRAFT DAMPER.

HOOD SCHEDULE					
No	SERVICE	TYPE	CFM	THROAT SIZE	S.P. DROP
OA-H-1	OUTSIDE AIR	INTAKE	560	12"X12"	0.02"

- (1) PROVIDE INSULATED ROOF CURB COMPATIBLE WITH ROOF WARRANTY. COORDINATE ALL MATERIALS AND DIMENSIONS INCLUDING HEIGHT AND SLOPE WITH ARCHITECTS PLANS AND ROOFING CONTRACTOR.  
(2) PROVIDE BIRDSCREEN AND TRANSITION DUCT TO HOOD INLET SIZE.

AIR PURIFICATION IONIZER SCHEDULE				
No	SERVICE	CFM	REMARKS	NOTES
AP-1	AHU-2	1,400	PLASMA AIR MODEL 600 OR APPROVED EQUAL	(1, 2, 3)
AP-2	AHU-4	1,950	PLASMA AIR MODEL 600 OR APPROVED EQUAL	(1, 2, 3)

- (1) INTERLOCK IONIZER WITH RESPECTIVE SUPPLY FAN.  
(2) MOUNT IONIZER WITHIN UNIT PER MANUFACTURER'S INSTRUCTIONS WITH CONTROL PANEL.  
(3) PROVIDE 24V AC INPUT. CONNECT TO A/C UNIT CONTROLS CIRCUIT.

HIGH VOLUME LOW SPEED FAN SCHEDULE									
No	SERVICE	FAN DIAMETER (FT)	WEIGHT (LB)	MAX SPEED (RPM)	DRIVE	ELECTRIC SERVICE	REC. BREAKER (A)	CONTROL	REMARKS
HVLS-1	101 SERV. BAY	10'	220	145	VFD	480/3/60	10.0	(1)	BAF POWERFOIL D OR APPROVED EQUAL (2, 3, 4)
HVLS-2	101 SERV. BAY	10'	220	145	VFD	480/3/60	10.0	(1)	BAF POWERFOIL D OR APPROVED EQUAL (2, 3, 4)
HVLS-3	101 SERV. BAY	10'	220	145	VFD	480/3/60	10.0	(1)	BAF POWERFOIL D OR APPROVED EQUAL (2, 3, 4)
HVLS-4	101 SERV. BAY	10'	220	145	VFD	480/3/60	10.0	(1)	BAF POWERFOIL D OR APPROVED EQUAL (2, 3, 4)

- (1) PROVIDE STANDARD CONTROLLER WITH ON/OFF AND VARIABLE SPEED CONTROL, PASSWORD PROTECTION, AND POWERED BY FAN DRIVE.  
(2) FACTORY-APPLIED FINISH COLOR SHALL BE COORDINATED WITH THE ARCHITECT, INCLUDING AVAILABLE CUSTOM COLOR OPTIONS.  
(3) PROVIDE REQUIRED MANUFACTURER MOUNTING KIT IN THE FIELD PRIOR TO SHOP DRAWING PHASE. VERIFY LENGTH OF MOUNTING KIT REQUIRED.  
(4) PROVIDE PROGRAMMABLE THREE PHASE VOLTAGE MONITOR WITH 25 FAULT MEMORY (ICM CONTROLS ICM450A OR APPROVED EQUAL) ON ALL EQUIPMENT REQUIRING THREE PHASE ELECTRICAL.

GRILLE SCHEDULE					
SYMBOL	SIZE	SERVICE	LOCATION	FINISHED	REMARKS
A	12"X12"	SUPPLY	CEILING	WBE	TITUS TDC-AA, FRAME 6 (BEVELED SURFACE MOUNT), G2 PATTERN OR APPROVED EQUAL (1)
B	24"X24" / 6"Ø	SUPPLY	CEILING	WBE	TITUS TMS-3 W/ SECTORIZING BAFFLE OR APPROVED EQUAL (2, 6)
C	24"X24" / 8"Ø	SUPPLY	CEILING	WBE	TITUS TMS-3 (STEEL) OR APPROVED EQUAL (2)
D	24"X24" / 10"Ø	SUPPLY	CEILING	WBE	TITUS TMS-3 (STEEL) OR APPROVED EQUAL (2)
G	24"X12"	RETURN	CEILING	WBE	TITUS 50FF-3 (LAY-IN WITH FILTER FRAME) OR APPROVED EQUAL (3)
H	24"X24"	RETURN	CEILING	WBE	TITUS 50FF-3 (LAY-IN WITH FILTER FRAME) OR APPROVED EQUAL (3)
J	10"X8"	SUPPLY	SIDEWALL	COORD. W/ ARCH. (5)	TITUS 300FS OR APPROVED EQUAL (5)
K	10"X8"	RETURN	SIDEWALL	COORD. W/ ARCH. (5)	TITUS 350FL OR APPROVED EQUAL (5)
L	22"X12"	EXHAUST AIR	LOUVER	(4)	RUSKIN EMES20MD (MIAMI-DADE COUNTY AND BIRDSCREEN) OR APPROVED EQUAL
M	12"X12"	EXHAUST AIR	LOUVER	(4)	RUSKIN EMES20MD (MIAMI-DADE COUNTY AND BIRDSCREEN) OR APPROVED EQUAL
P	26"X12"	EXHAUST AIR	LOUVER	(4)	RUSKIN EMES20MD (MIAMI-DADE COUNTY AND BIRDSCREEN) OR APPROVED EQUAL
R	24"X16"	RETURN	SIDEWALL	COORD. W/ ARCH. (5)	TITUS 350FL OR APPROVED EQUAL (5)
S	168"X36"	INTAKE	LOUVER	(4)	RUSKIN ELC6375DXD, WITH FLANGE, 120V MOTORIZED ACTUATOR AND END SWITCH (COMBINATION HURRICANE LOUVER WITH BIRD SCREEN) OR APPROVED EQUAL (7)
T	56"X16"	INTAKE	LOUVER	(4)	RUSKIN ELF375X WITH FLANGE OR APPROVED EQUAL
U	62"X12"	EXHAUST AIR	LOUVER	(4)	RUSKIN EMES20MD (MIAMI-DADE COUNTY AND BIRDSCREEN) OR APPROVED EQUAL
W	10"Ø	SUPPLY	DUCT	COORD. W/ ARCH. (5)	TITUS TMR, POSITION 1 OR APPROVED EQUAL
Y	36"X18"	RETURN	SIDEWALL	COORD. W/ ARCH. (5)	TITUS 350FL OR APPROVED EQUAL (5)
Z	12"X8"	SUPPLY	DUCT	COORD. W/ ARCH. (5)	TITUS 300FS OR APPROVED EQUAL (5)
AA	6"Ø	SUPPLY	DUCT	COORD. W/ ARCH. (5)	TITUS TMR, POSITION 1 OR APPROVED EQUAL
BB	12"X12"	SUPPLY	CEILING	WBE	TITUS TDC-AA, FRAME 6 (BEVELED SURFACE MOUNT), A4 PATTERN OR APPROVED EQUAL (1)

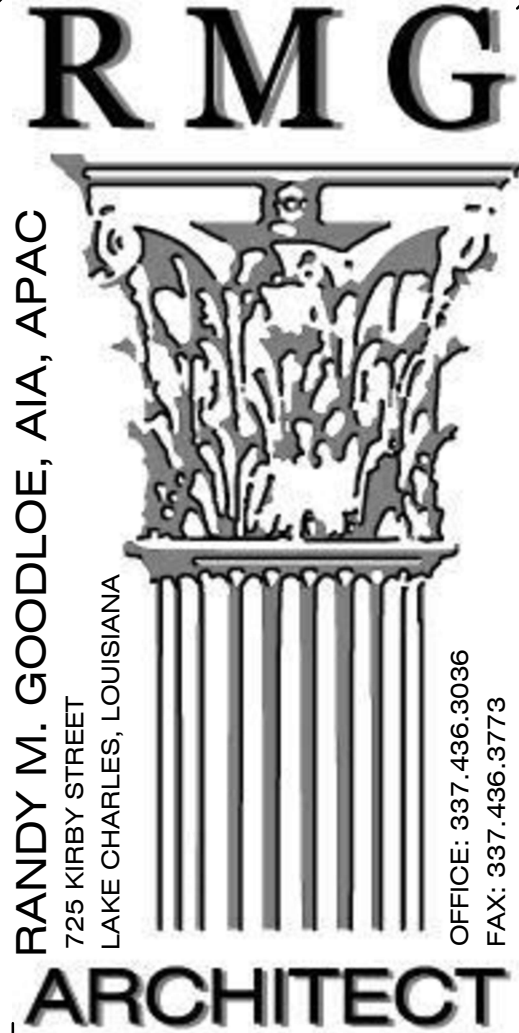
- (1) PROVIDE INSULATED SQUARE TO ROUND ADAPTER.  
(2) PROVIDE FACTORY R-6 INSULATION ON TOP OF DIFFUSER TAPED AT PERIMETER  
(3) FILTER SHALL BE LOCATED AT AHU. DO NOT PROVIDE FILTER AT GRILLE.  
(4) PROVIDE 70% KYNAR (POLYVINYLIDENE FLUORIDE RESIN) FINISH. COORDINATE COLOR WITH ARCHITECT DURING SHOP DRAWING PHASE. INSTALLATION SHALL MEET HURRICANE RATINGS.  
(5) GRILLES TO BE PAINTED IN FIELD BY PAINTING CONTRACTOR WITH COLOR AS DIRECTED BY ARCHITECT.  
(6) PROVIDE TITUS SECTORIZING BAFFLE.  
(7) VERIFY EXACT REQUIRED SIZE WITH ARCHITECT PRIOR TO SHOP DRAWINGS TO FIT LOUVER IN HIGH WINDOW OPENING AND MATCHING SIMILAR WINDOW OPENINGS.

PRESSURE TABLE					
ITEM	O/A	R/A	S/A	E/A	PRESSURE
AHU-1	110	1290	1400	--	+110
AHU-2	110	1290	1400	--	+110
AHU-3	150	1050	1200	--	+150
AHU-4	200	1750	1950	--	+200
EF-1	--	--	--	50	-50
EF-2	--	--	--	50	-50
EF-3	--	--	--	100	-100
EF-4	--	--	--	50	-50
EF-5	--	--	--	100	-100
EF-7	--	--	--	100	-100
TOTAL ZONE	570	5380	5950	450	+120



ASSOCIATED DESIGN GROUP, INC.  
3909 W Congress Street, Suite 201  
Lafayette, Louisiana 70506  
Phone: (337) 234-5710  
Email: [adginc@adginc.org](mailto:adginc@adginc.org)

Project No. 25326



RANDY M. GOODLOE, AIA, APAC  
725 KIRBY STREET  
LAKE CHARLES, LOUISIANA

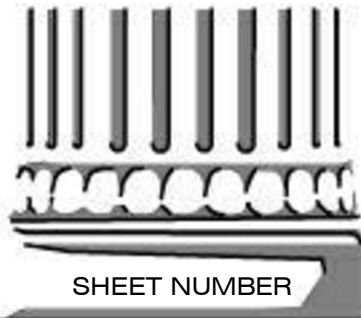
OFFICE: 337.436.3036  
FAX: 337.436.3773



NEW CONSTRUCTION  
**FORD PRO**  
FOR  
**MIKE WILLIS**  
2010 PATTON ST.

© COPYRIGHT 2019,  
RANDY M. GOODLOE, A.I.A. APAC  
ALL INFORMATION, EITHER DRAWN, WRITTEN, OR IMPLIED APPEARING IN THIS DOCUMENT SHALL NOT BE DUPLICATED, DISCLOSED, OR OTHERWISE USED WITHOUT THE WRITTEN PERMISSION OF THE AUTHOR, RANDY M. GOODLOE, AIA, APAC. THIS DOCUMENT IS AN INSTRUMENT OF SERVICE AND IS THE SOLE PROPERTY OF THE AUTHOR. FURTHERMORE, THE USE OF THIS DOCUMENT FOR ANY PURPOSE SHALL BE REVOKED, IF THE INTENT OF THE DESIGN OR THE CONSTRUCTION TECHNIQUES OR DETAILS SHOWN HEREIN ARE NOT ADHERED TO OR THE CONTRACTUAL AGREEMENT GOVERNING THEIR USE ARE NOT STRICTLY ADHERED TO.

PROJECT NO.	25012
PROJECT MANAGER	JM
DATE ISSUED	2026.05.22
REVISED	



**M-201**  
HVAC SCHEDULES